

## 9.3 Pressure Sensor Replacement

### Safety



Use lockout / tagout procedures prior to starting work.

### 9.3.1 Removing the Pressure Sensor

- **See Figure 9-5**

1. Turn off the GREEN MACHINE breaker in the main electrical distribution panel.
2. Follow lockout & tagout procedures prior to starting work.
3. Unscrew the 8 cover screws and remove the cover from the GREEN MACHINE.
4. Remove the cover from the Internal Junction Box.
5. Remove the Pressure Sensor from the pressure sensor port.
6. Disconnect the 3 Pressure Sensor wires from the terminal block inside the Internal Junction Box. **Refer to page 7 of the Electrical Drawing Packet for wiring from the VST Control Panel to the Internal Junction Box for the Pressure Sensor. See [www.vsthose.com/education-gm3-cs2a-usa/](http://www.vsthose.com/education-gm3-cs2a-usa/)**

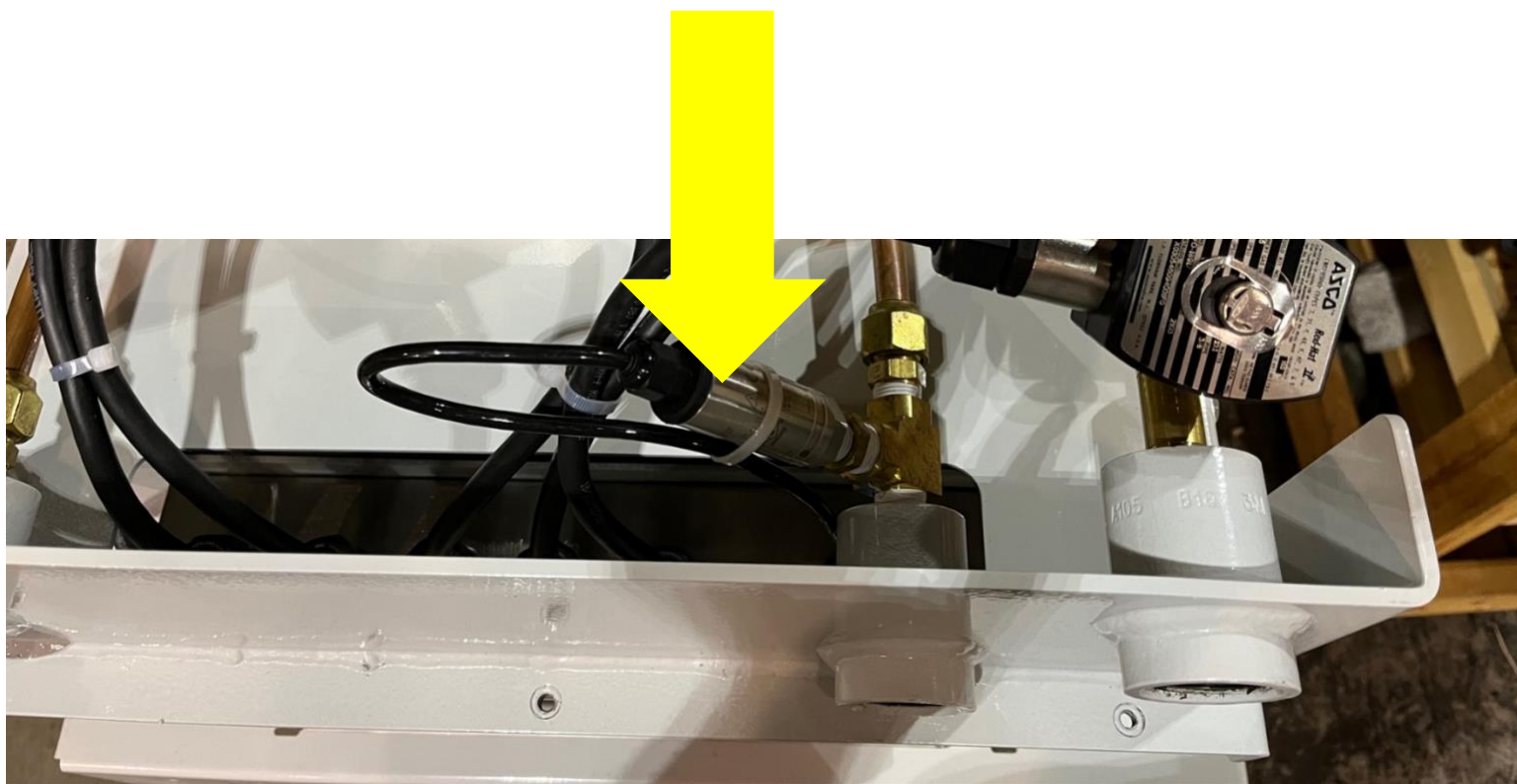
### 9.3.2 Installing the Pressure Sensor

- **See Figure 9-5**

1. Install the new Pressure Sensor. Use gasoline resistant PTFE tape on the pipe threads.

**CAUTION: Be sure to tighten the Pressure Sensor using the nut on the bottom of the sensor during the installation.**

2. Connect the Pressure Sensor wires to the terminal blocks inside the Internal Junction Box. **Refer to page 7 of the Electrical Drawing Packet for wiring from the VST Control Panel to the Internal Junction Box for the Pressure Sensor. See [www.vsthose.com/education-gm3-cs2a-usa/](http://www.vsthose.com/education-gm3-cs2a-usa/)**
3. Install the Internal Junction Box cover.
4. Remove the lock(s) and tags from the lockout/tagout and turn the GREEN MACHINE breaker back on at the main electrical distribution panel.
5. On the Control Panel, tap the Home button.
6. Verify Pressure Sensor Alarm is not active and the pressure reading on the PLC is 0.00 +/- 0.10 IWC.
7. Put the cover on the GREEN MACHINE and screw on the 8 cover screws.
8. The GREEN MACHINE is now operational.



**Figure 9-5: Pressure Sensor Installed in GREEN MACHINE**