

## 8.7 Overfill Alarm

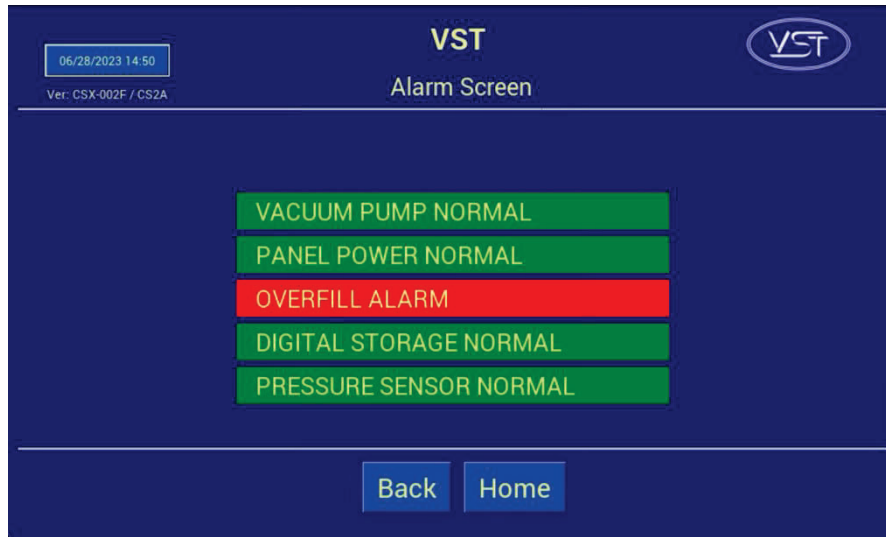


Figure 8-22: Alarm Screen with Active Alarm

- A VST Control Panel PLC Overfill Alarm is Active when the Fuel Management System Overfill Alarm is Active. **See Figure 8-22.**
- An overfill condition exists when, during a fuel drop, the gasoline level in the UST exceeds the Overfill Alarm setting, which is 90% capacity of the UST. **See Figure 8-23.**
  - The VST Control Panel is connected to the Tank Overfill Alarm output relay.
  - When an overfill occurs, the output (N.C.) relay opens and GREEN MACHINE will turn OFF.
  - The Overfill Alarm box will display RED indicating an Overfill Alarm is active.
  - When the gasoline level drops below the Overfill Alarm level, the output relay closes and the alarm clears. The GREEN MACHINE will remain OFF for 2 additional hours.
  - After the 2 hours elapse:
    - The Overfill Alarm box will not be shown on the Fault and Alarm Screen.
    - The GREEN MACHINE will turn ON if the UST pressure is above 0.2 IWC.
    - The GREEN MACHINE will remain OFF if the UST pressure is below 0.2 IWC.