

8.7 Overfill Alarm

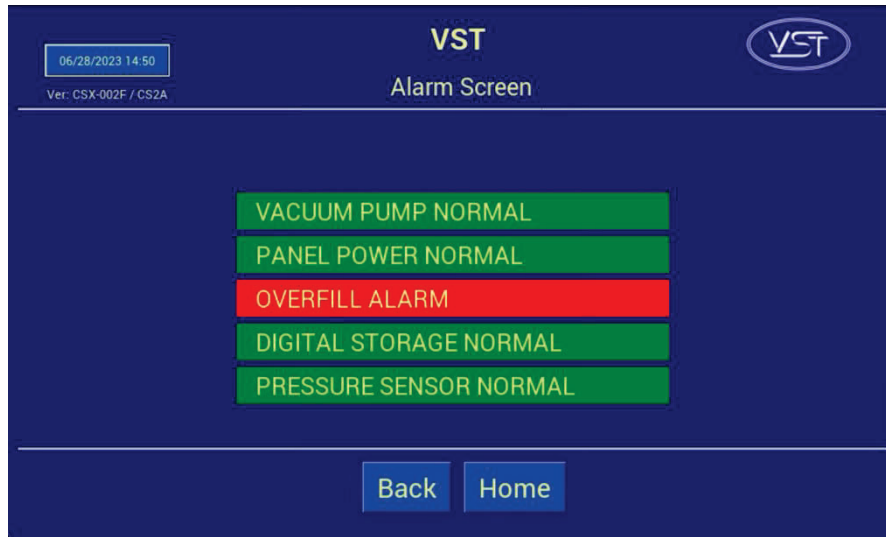


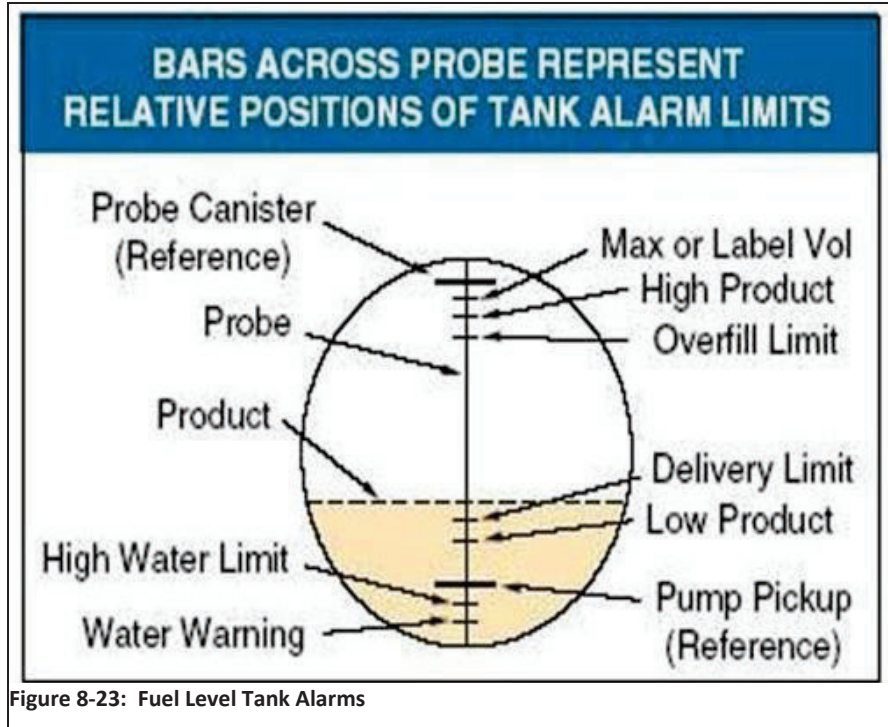
Figure 8-22: Alarm Screen with Active Alarm

- A VST Control Panel PLC Overfill Alarm is Active when the Fuel Management System Overfill Alarm is Active. **See Figure 8-22.**
- An overfill condition exists when, during a fuel drop, the gasoline level in the UST exceeds the Overfill Alarm setting, which is 90% capacity of the UST. **See Figure 8-23.**
 - The VST Control Panel is connected to the Tank Overfill Alarm output relay.
 - When an overfill occurs, the output (N.C.) relay opens and GREEN MACHINE will turn OFF.
 - The Overfill Alarm box will display RED indicating an Overfill Alarm is active.
 - When the gasoline level drops below the Overfill Alarm level, the output relay closes and the alarm clears. The GREEN MACHINE will remain OFF for 2 additional hours.
 - After the 2 hours elapse:
 - The Overfill Alarm box will not be shown on the Fault and Alarm Screen.
 - The GREEN MACHINE will turn ON if the UST pressure is above 0.2 IWC.
 - The GREEN MACHINE will remain OFF if the UST pressure is below 0.2 IWC.

8.7.1 Overfill Alarm Troubleshooting Steps

| Steps | Procedures |
|-------|--|
| 1. | An overfill may cause the Vacuum Pump to seize, which may cause the Vacuum Pump motor to trip out on the thermal overloads. |
| 2. | If an Overfill Alarm Activates while a test is running: |
| | <ul style="list-style-type: none"> • The test will terminate. |
| | <ul style="list-style-type: none"> • The Fault and Alarm Screen is displayed and the Overfill Alarm box will display RED. |
| | <ul style="list-style-type: none"> • An underground storage tank overfill is a serious situation that could damage internal components in the GREEN MACHINE. |
| | <ul style="list-style-type: none"> • An overfill might happen if the delivery person fails to stop fueling, ignoring both the overfill limit and the high-product limit. |
| | <ul style="list-style-type: none"> • VST has determined that overfill protection is needed to reduce the chance of gasoline entering the GREEN MACHINE. |
| | <ul style="list-style-type: none"> • Below are the precautionary measures taken to protect the GREEN MACHINE against an overfill situation: |
| | <ul style="list-style-type: none"> <ul style="list-style-type: none"> • The VST Control Panel will disable the GREEN MACHINE when the UST level reaches the OVERFILL Alarm setting (OVERFILL: 90%) when the relay contacts open at the Fuel Management System. |
| | <ul style="list-style-type: none"> <ul style="list-style-type: none"> • Eventually, as fuel is dispensed, the product would drop below the OVERFILL Alarm threshold thereby resetting the relay and re-enabling the GREEN MACHINE. |
| | <ul style="list-style-type: none"> <ul style="list-style-type: none"> • The Fuel Management System OVERFILL ALARM will not guarantee that the GREEN MACHINE is protected from gasoline entering it. |
| | |
| 3. | The table below lists the VST recommended alarm settings for the tank level. |

| Position of Tank Alarm Limits | VST Recommended Alarm Settings |
|-------------------------------|--------------------------------|
| Overfill Limit | 90% |



| Overfill Report | | |
|-------------------------------------|--------|-----------|
| Date: | | |
| Contractor Name: | | |
| Contractor Company: | | |
| GDF Name: | | |
| Address: | | |
| City: | State: | ZIP Code: |
| GDF Contact Person Name: | | |
| GDF Contact Person Title: | | |
| GDF Contact Person Phone: | | |
| GDF Contact Person E-mail: | | |
| Overfill Details | | |
| Date of Overfill: | | |
| Octane of the fuel being dispensed: | | |
| Serial Number of the GREEN MACHINE: | | |