

**Executive Orders VR-201-AA and VR-202-AA  
Assist Phase II EVR System**

**Exhibit 12  
VEEDER-ROOT MAINTENANCE TRACKER (Optional)**

Definitions common to all certification and test procedures are in:

**D-200 Definitions for Vapor Recovery Procedures**

For the purpose of this procedure the term “ARB” refers to the California Air Resources Board, and the term “Executive Officer” refers to the ARB Executive Officer or his or her authorized representative or designate.

**1. PURPOSE AND APPLICABILITY**

The Maintenance Tracker is an optional security device produced and marketed by Veeder-Root (VR) as a means to control and record access to their tank monitoring and ISD systems. Unless a specialized “technician key” is made available, the Maintenance Tracker prevents unauthorized personnel from gaining access to tank monitoring system diagnostic and setup modes which are necessary to clear system alarms. The technician key is a physical chip device, similar to a flash memory stick, which plugs into a companion RS232 card installed on the TLS Console.

Because the Veeder-Root In-Station Diagnostics (ISD) system resides within the TLS Console, the Maintenance Tracker also restricts access to ISD related parameters such as vapor pressure sensor values. When Maintenance Tracker is installed and enabled, the parameters listed in Table 1 (see below) are not accessible through the TLS Console unless a technician key is made available. An alternative way to access these parameters without a technician key is available through the RS232 interface by using a software program developed by Veeder-Root called “ISD Setup Tool” version 1.09 or higher.

The purpose of this procedure is to provide instructions on how to access ISD and tank monitoring parameters specified in Table 1 when Maintenance Tracker is installed and enabled. This procedure only applies to GDFs equipped with Veeder-Root ISD systems or Veeder-Root tank monitoring systems. This procedure shall be used in conjunction with the appropriate or applicable procedure listed in Table 1.

The term “TLS Console” used throughout this Exhibit includes but is not limited to TLS-350, TLS-350 Plus, TLS-350-R, Red Jacket ProMax, and Gilbarco EMC consoles, which are also referenced in Exhibit 1.

**TABLE 1**  
**Description of ISD and Tank Monitoring Parameters**  
**Restricted By Maintenance Tracker**

Executive Order	Exhibit	Description of Parameter
VR-201	<b>Exhibit 9:</b> Liquid Condensate Trap Compliance Test Procedure	Liquid Sensor Alarm History Report
VR-202	<b>Exhibit 9:</b> Veeder-Root ISD Operability Test Procedure	1. ISD Pressure Sensor Value 2. EVR/ISD Setup Report
VR-202	<b>Exhibit 11:</b> Liquid Condensate Trap Compliance Test Procedure	Liquid Sensor Alarm History Report

## 2. PRINCIPLE AND SUMMARY OF PROCEDURE

As indicated in section one, there are two ways to access ISD and tank monitoring parameters when Maintenance Tracker is installed and enabled; directly from the TLS Console using a key or indirectly through the RS232 interface using a specialized software program developed by Veeder-Root. This procedure provides access instructions for both methods. Option 1 provides instructions on how access the ISD and tank monitoring parameters directly from the TLS Console when a Maintenance Tracker key is available. Option 2 provides instructions on how to access the ISD and tank monitoring parameters through the RS232 interface by using the software program called "ISD Setup Tool" version 1.09 or higher.

## 3. BIASES AND INTERFERENCES

- 3.1. This procedure shall be used in conjunction with the applicable procedure listed in Table 1. All biases and interferences must be followed for each test procedure (or Exhibit) within ARB Executive Orders VR-201 and VR-202 and any subsequent amendments or revisions.
- 3.2. If the GDF is equipped with a wireless vapor pressure sensor (Veeder-Root part number 861190-201), the only way to access the parameters in Table 1 is to use Veeder-Root ISD Setup Tool version 1.10 or higher.

## 4. EQUIPMENT

- 4.1. Option 1: Maintenance Tracker Key, see Figure 3.  
To acquire a Maintenance Tracker key contact Veeder-Root Technical Support at 1-800-323-1799 M-F 8am-7pm ET or [technicalsupport@veeder.com](mailto:technicalsupport@veeder.com).

- 4.2. Option 2: RS232 interface (standard on all ISD systems), laptop computer, cables, and Veeder-Root ISD Setup Tool version 1.09 or higher software. To acquire a copy of ISD Setup Tool version 1.09 or higher contact Veeder-Root Technical Support at 1-800-323-1799 M-F 8am-7pm ET or [technicalsupport@veeder.com](mailto:technicalsupport@veeder.com).

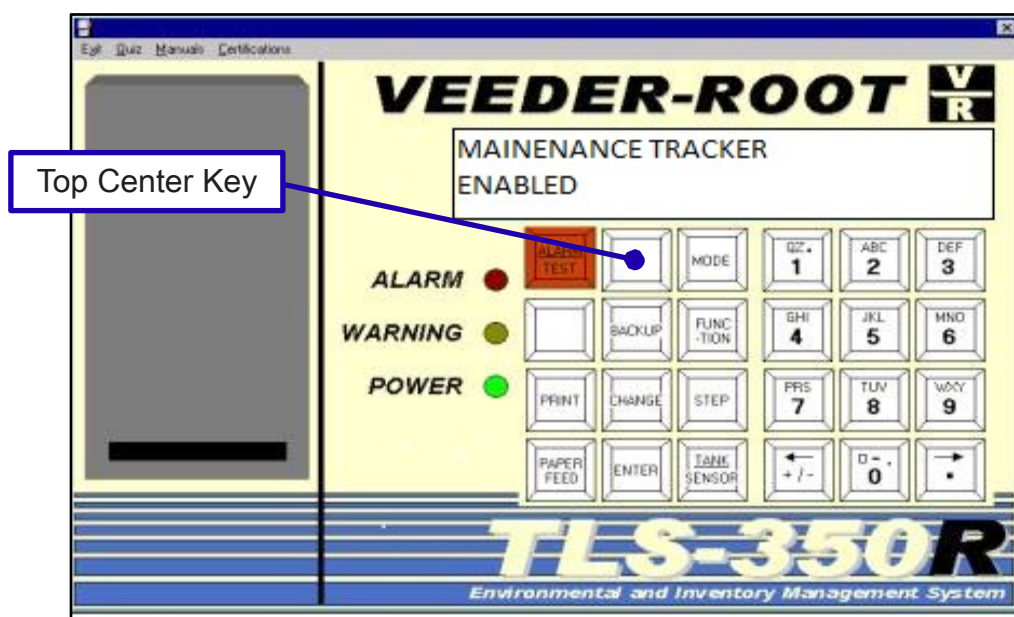
## 5. PRE ACCESS PROCEDURE

This procedure shall be used in conjunction with the applicable procedure listed in Table 1. All pretest procedures must be followed for each test procedure (Exhibit) within ARB Executive Orders VR-201 and VR-202 and any subsequent amendments or revisions.

## 6. ACCESS PROCEDURE

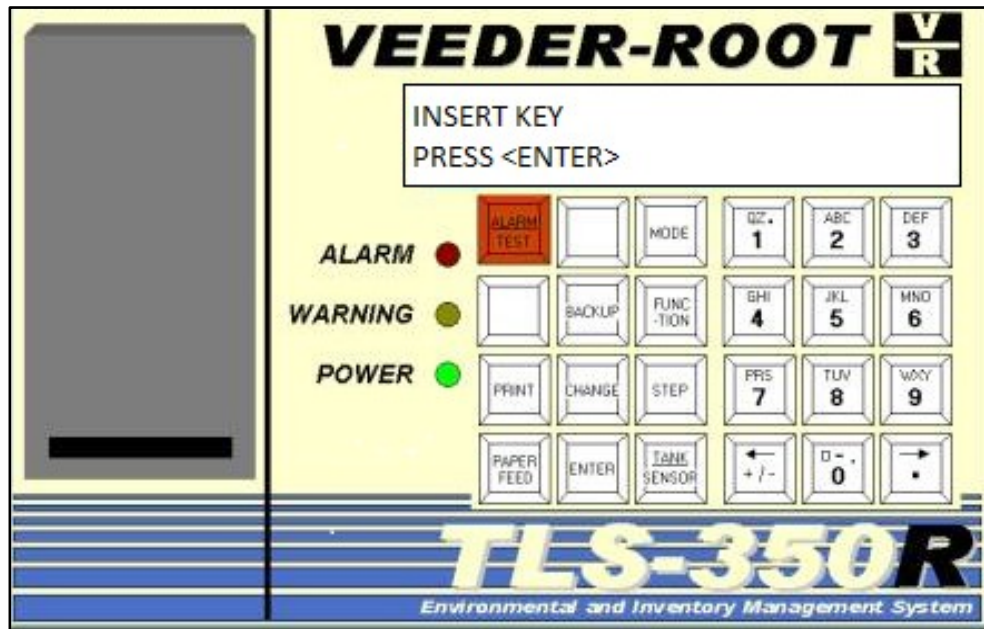
- 6.1. Option 1: Accessing ISD and tank monitoring parameters through the TLS Console when Maintenance Tracker is enabled and key is available:
- 6.1.1. When the top center key on the Veeder-Root TLS Console is pressed, "MAINTENANCE TRACKER ENABLED" is displayed. See Figure 1.

**FIGURE 1**  
**Maintenance Tracker Enabled on TLS Console**



- 6.1.2. In order to gain access to the diagnostic and setup menus, the user would then press the step key. The display will now read: "INSERT KEY PRESS <ENTER>". See Figure 2.

**FIGURE 2**  
Maintenance Tracker Enabled on TLS Console



- 6.1.3. The Maintenance Tracker key (see Figure 3) must be plugged into a RS-232 port underneath the TLS Console within one minute or system will timeout. See Figure 4.

**FIGURE 3**  
Maintenance Tracker Key

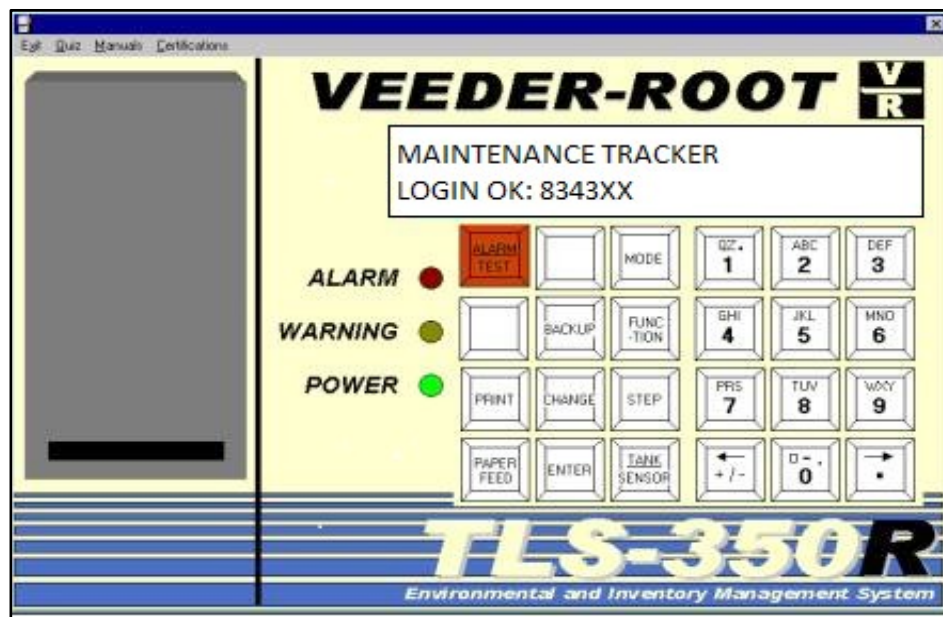


**FIGURE 4**  
**Maintenance Tracker Key Plugged Into TLS Console**



- 6.1.4. Once the Key is inserted and recognized, the TLS Console display will now display "MAINTENANCE TRACKER LOGIN OK: XXXXXX". The XXXXXX is the Technician Identification Number. See Figure 5. The feature has now been temporarily disabled. Any key pressed will now display "ALL FUNCTIONS NORMAL".

**FIGURE 5**  
**Maintenance Tracker Temporarily Disabled**



- 6.1.5. Return to the Exhibit listed in Table 1 to continue the test (Exhibit) in progress.
- 6.2. Option 2: Accessing ISD parameters through the RS232 interface when Maintenance Tracker is enabled yet key is not available:
  - 6.2.1. Connect a PC or Laptop equipped with Veeder-Root ISD Setup Tool version 1.09 or higher software per instructions in IOM 10 of VR-202
  - 6.2.2. Start the ISD Setup Tool version 1.09 or higher software on the laptop or PC.
  - 6.2.3. Click the check mark or enter password when prompted to “Enter Password”. See Figure 6.

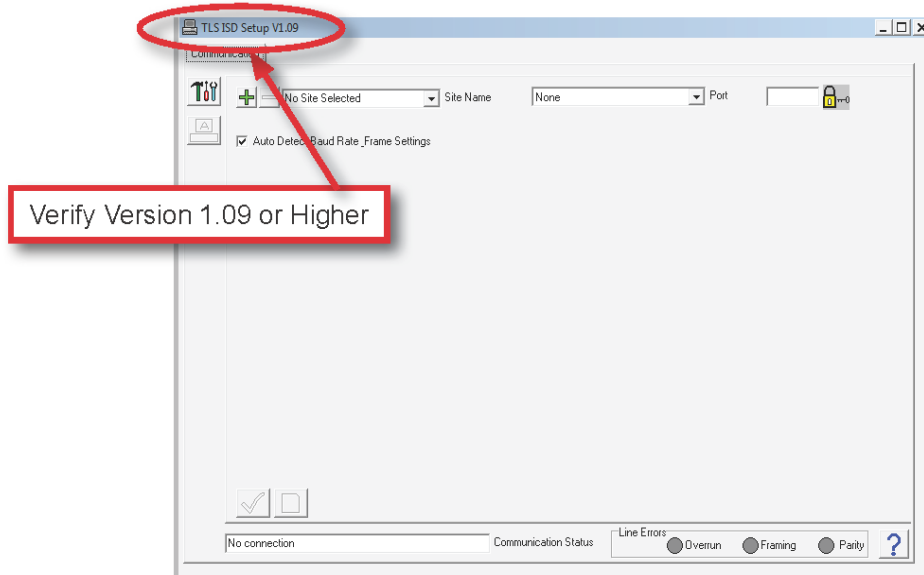
**FIGURE 6**  
**Veeder-Root Setup Tool-Enter Password**



- 6.2.4. Verify that Veeder-Root ISD Setup Tool version 1.09 or higher is being used. See Figure 7.

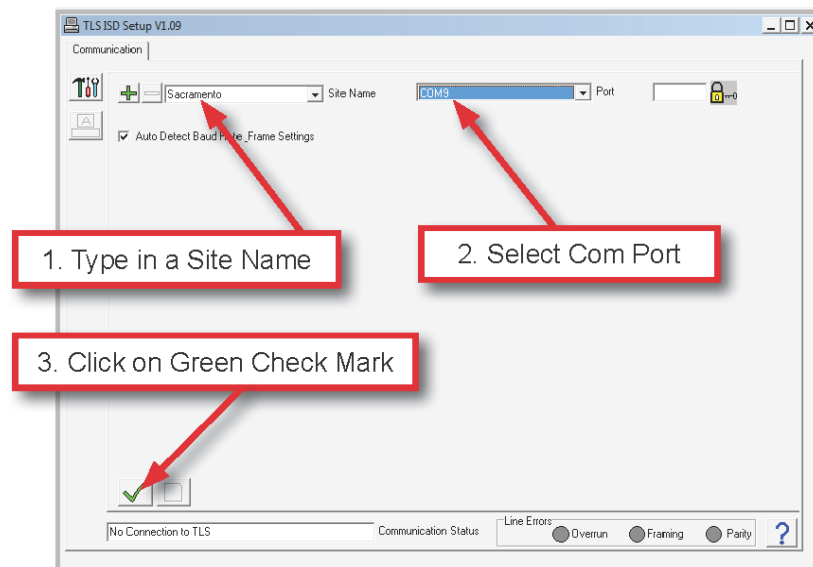
**NOTE:** Figures 7 through 17 are typical views of the laptop screen that may differ for different versions of ISD Setup Tool version 1.09 and higher.

**FIGURE 7**  
**Veeder-Root ISD Setup Tool Version 1.09**



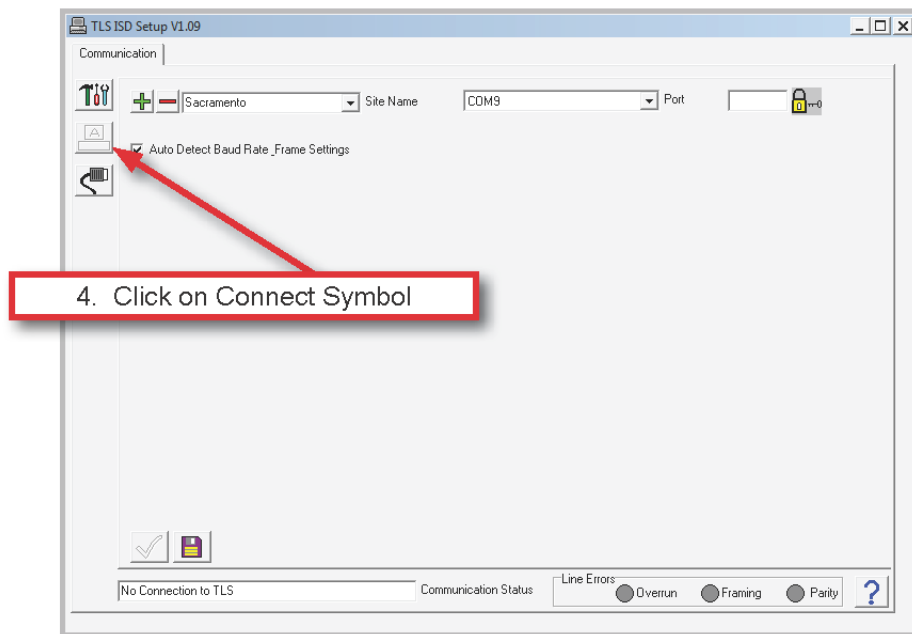
- 6.2.5. Type in the site name. Then select the communication port and click on the green check mark. See Figure 8.

**FIGURE 8**  
**Veeder-Root Setup Tool-Site Name**



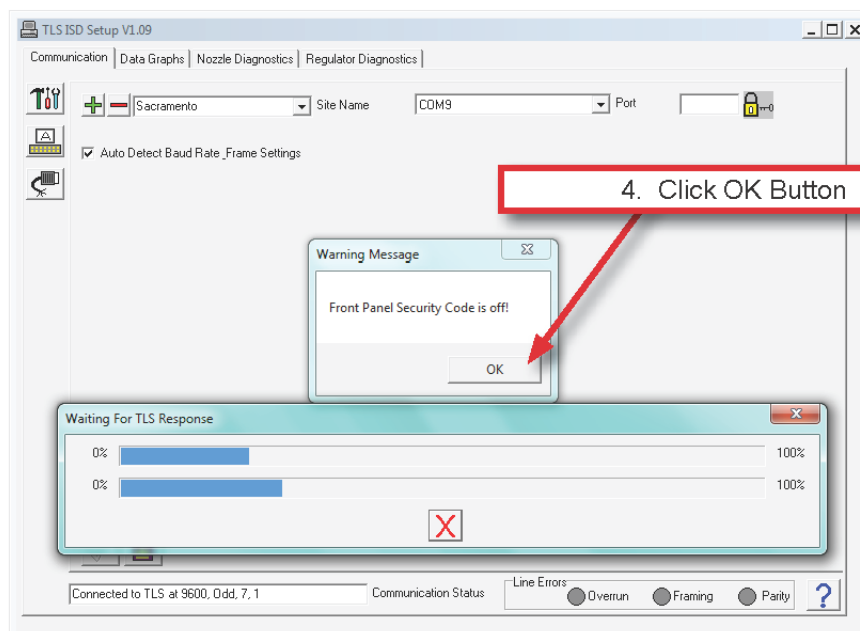
6.2.6. Click on the connect symbol. See Figure 9.

**FIGURE 9**  
**Veeder-Root Setup Tool-Connecting**



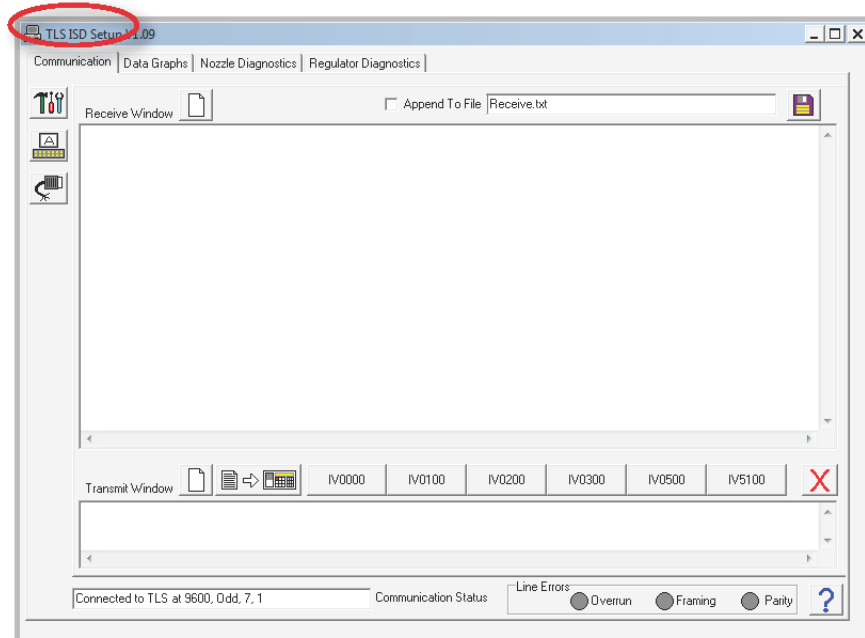
6.2.7. Click OK on the “Warning Message” and then click on the Computer Icon. Software will now connect to the TLS Console. See Figure 10.

**FIGURE 10**  
**Veeder-Root Setup Tool-Connecting**



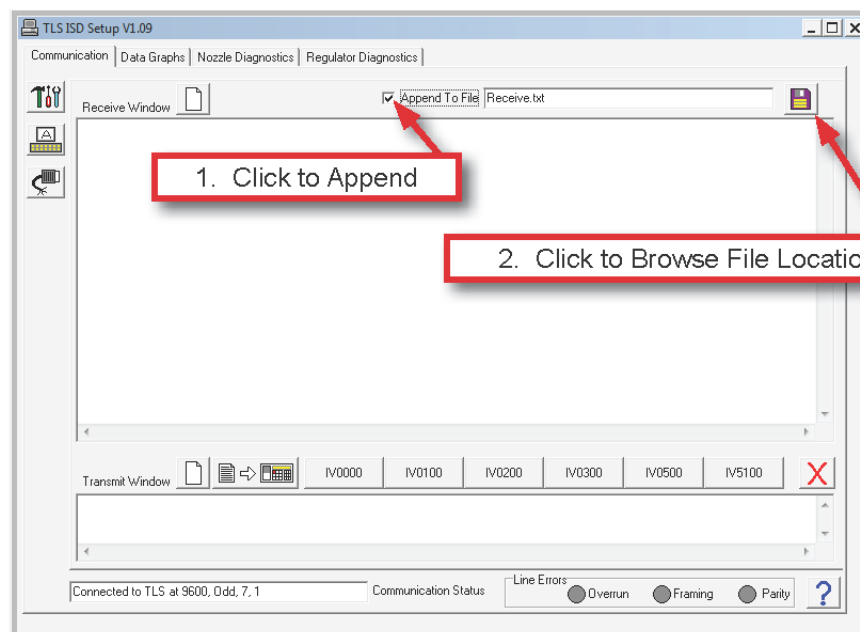
- 6.2.8. Once connected. Select the “Communication” Tab from the top of the screen. See Figure 11.

**FIGURE 11**  
**Veeder-Root Setup Tool-Saving File**



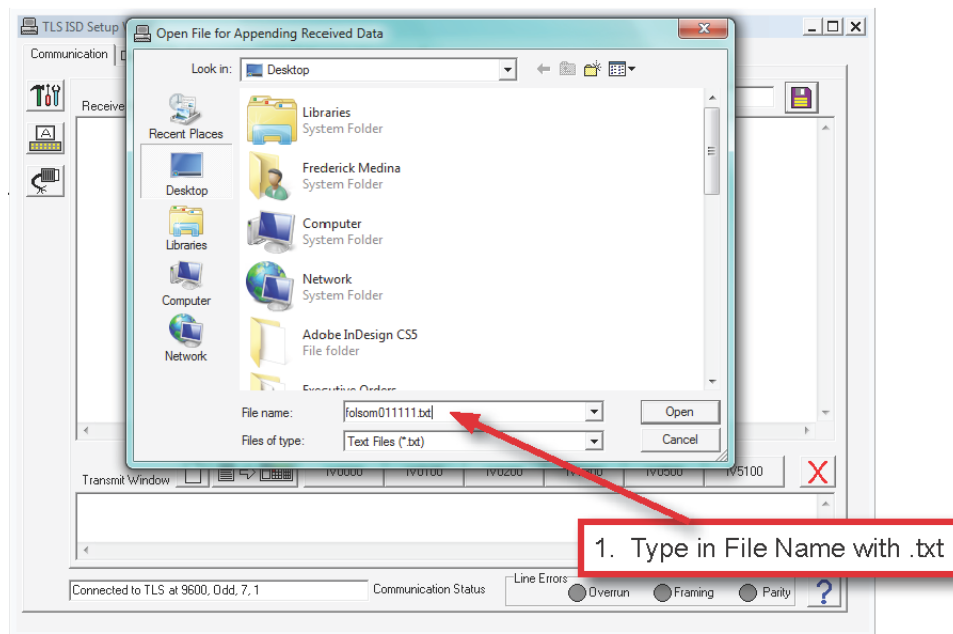
- 6.2.9. To save reports to a file, click on box to “Append to File”. Then click to browse file location. See Figure 12.

**FIGURE 12**  
**Veeder-Root Setup Tool-Saving File**



6.2.10. To save reports type in a file name with a .txt extension. See Figure 13.

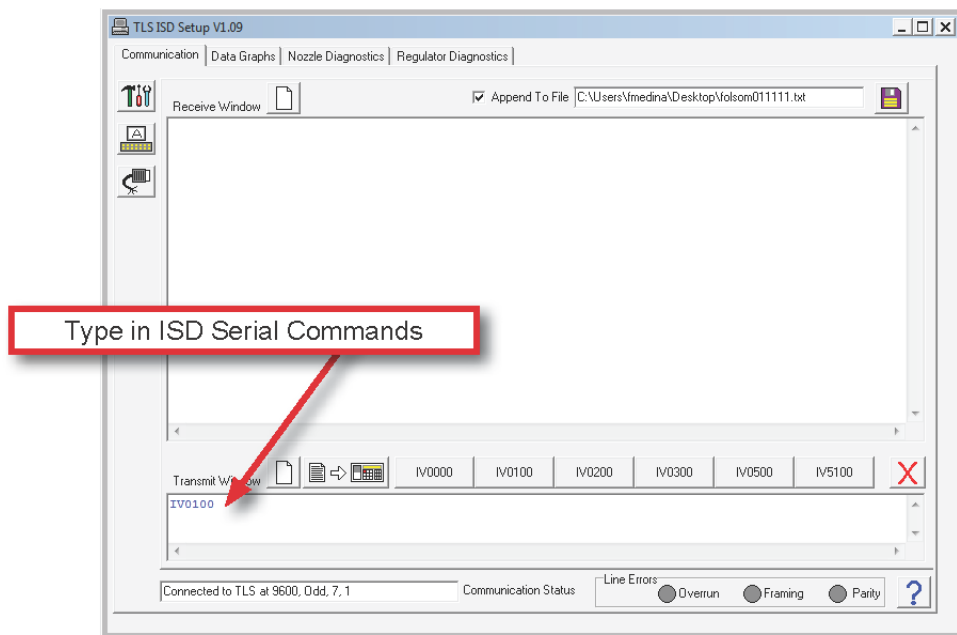
**FIGURE 13**  
**Veeder-Root Setup Tool-Saving File**



6.2.11. Serial commands can now be entered and results will be saved in file selected above. See Figure 14. The Liquid Sensor Alarm History Report parameters for VR-201 (Exhibit 9) and VR-202 (Exhibit 11) can be accessed by using the following serial command: **I302SS**

The ISD Setup Report for VR-202 (Exhibit 9) can be accessed by using the following serial command for the Hose Table Data: **IV4A00**. The vapor flow meter serial numbers can be accessed with the following serial command: **IV8300**.

**FIGURE 14**  
**Veeder-Root Setup Tool-Serial Commands**



6.2.12. The parameters are listed in Table 2 (see below) can be accessed by selecting the “Regulator Diagnostics” tab from the top of the menu. See Figure 15.

**NOTE:** Some of the parameters listed do not apply to the Assist Phase II EVR System. The parameters appear in the PC Setup Tool screen

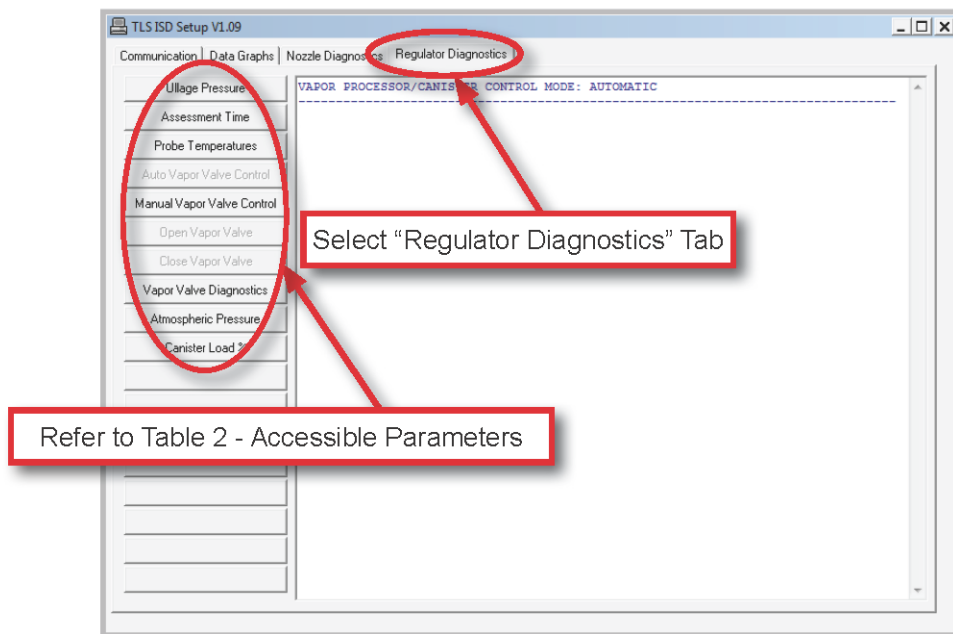
since the tool is also used for the Balance Phase II EVR Systems. Only the Ullage Pressure and Assessment Time are used in VR-201 and VR-202.

**TABLE 2**  
**Parameters Accessible Via Regulator Diagnostics Tab**

Parameter
Ullage Pressure
Assessment Time
Probe Temperature*
Automatic Vapor Valve Control*
Manual Vapor Valve Control-Open/Close*
Vapor Valve Diagnostics*
Atmospheric Pressure*
Canister Load %*

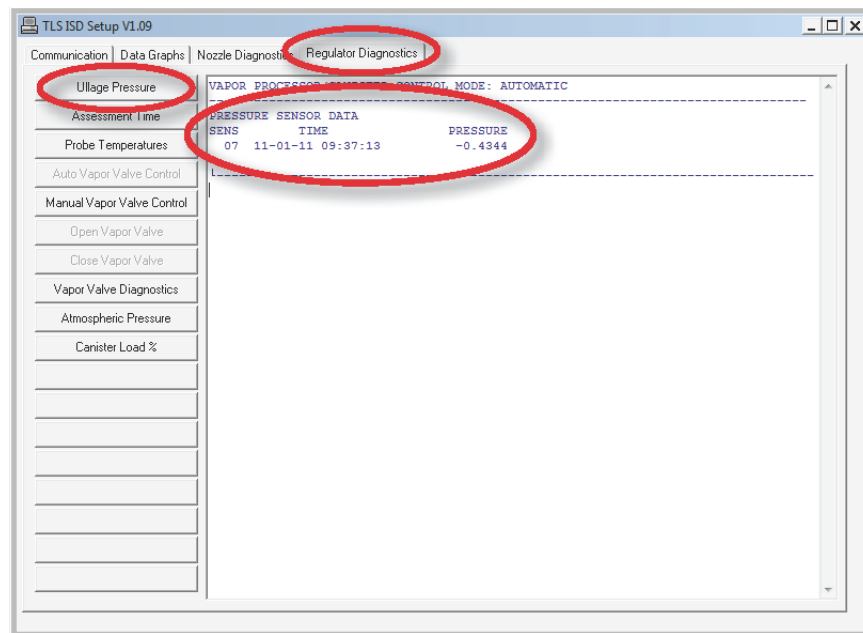
\*These Parameters do not apply to the Assist Phase II EVR System

**FIGURE 15**  
**Veeder-Root Setup Tool-Regulator Diagnostics**



- 6.2.13. To access the current ullage pressure reading, select the “Regulator Diagnostics” tab at the top of the screen and select “Ullage Pressure” on the left side of the screen. See Figure 16.

**FIGURE 16**  
**Veeder-Root Setup Tool-Ullage Pressure**



- 6.2.14. To access current ISD assessment time, select the “Regulator Diagnostics” tab at the top of the screen and select “Assessment Time” on the left side of the screen. See Figure 17.

**FIGURE 17**  
**Veeder-Root Setup Tool-ISD Assessment Time**

