



Thermal Printer

Model TSSP-TMPTR

Retrofit/Installation Instructions



Franklin Fueling Systems • 3760 Marsh Rd. • Madison, WI 53718 USA

Tel: +1 608 838 8786 • 800 225 9787 • Fax: +1 608 838 6433 • www.franklinfueling.com

Printer Installation

The following instructions are for the addition of an internal printer or replacement of an existing printer in a T5 Series Fuel Management System.

Note: The thermal printer requires controller module firmware rev 1.5 or higher.

Included with Printer:

- Plastic Bezel
- Thermal Printer on PCB (Printed Circuit Board)
- Hardware includes:
 - (2) stand-offs
 - Mounting screws (Quantity, size and use shown in chart)

		
(4) #6	(2) #8	(2) #10
For lower 4 holes in the PCB	For top of PCB, in stand-offs	For Plastic Bezel

Note: Use only the provided hardware to mount the printer.

Installation Procedure

Warning  **Disconnect power before opening the console cover.**

1. Open the Tank Gauge front door.
2. Remove the front door's inside cover plate by unscrewing the screws located on the plate. (Number of screws vary by model).

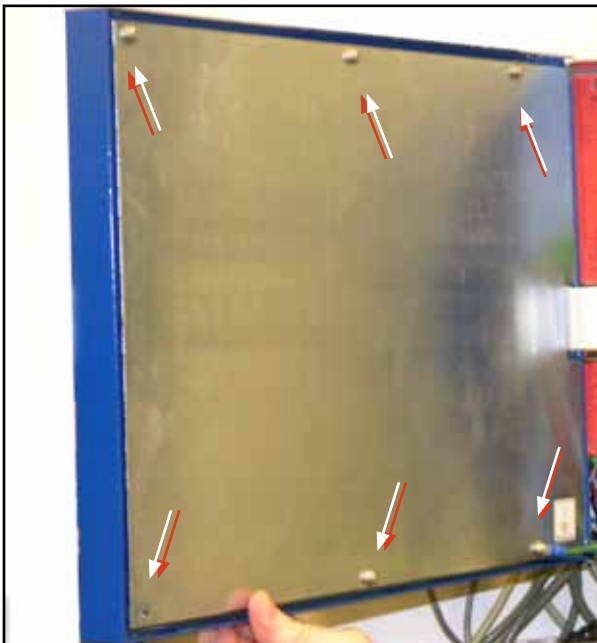


Figure 1: Remove Inside Cover Screws

To Retrofit a Printer in a Console Without One

- a. Remove the 4 nuts that secure the blank-off plate.
- b. Remove the plate (blank-off plate may stick to the overlay).
- c. Carefully cut out the part of the overlay that covers the printer opening using a sharp knife. Go to step 9.

3. Disconnect the cable that connects the impact printer to the interface board in the front door.

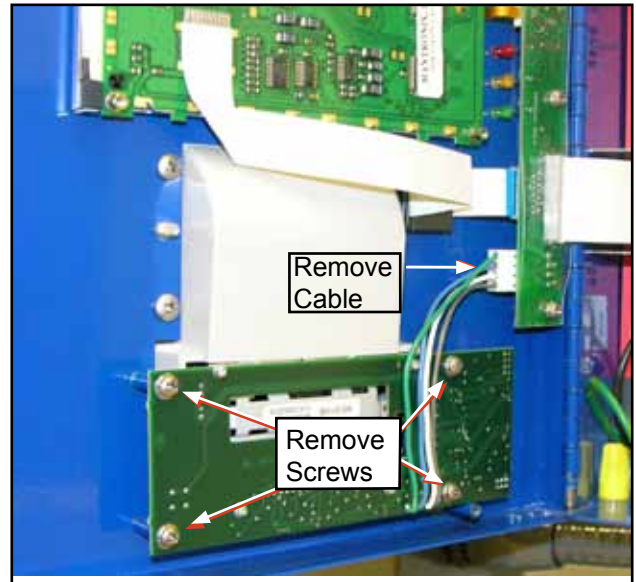


Figure 2: Disconnect Old Printer

4. Remove the roll of paper from the printer.
5. Remove the 4 screws that hold the impact printer to the front door.

Note: Be careful not to damage the ribbon cable.

6. Pull the printer gently and slowly a couple of inches away from the door. Completely remove the impact printer board.
7. Remove the 4 screws that hold the printer's plastic cover to the front door.

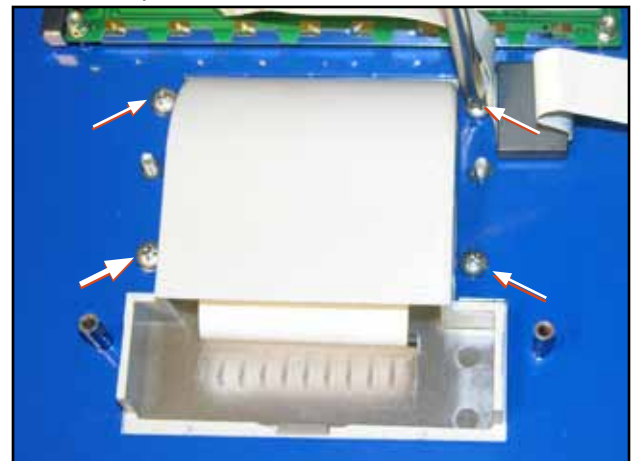


Figure 3: Remove Plastic Cover

8. Remove the plastic cover.
9. Place the new plastic bezel over the cutout in the front door. Fasten the bezel to the enclosure using the two #10 self-tapping screws supplied. Start the screws in the lower two mounting holes. Do not tighten screws all the way at this time. These screws will be tightened after installing the printer assembly.
10. Install the 2 stand-offs on the studs located next to the printer opening (Figure 4).

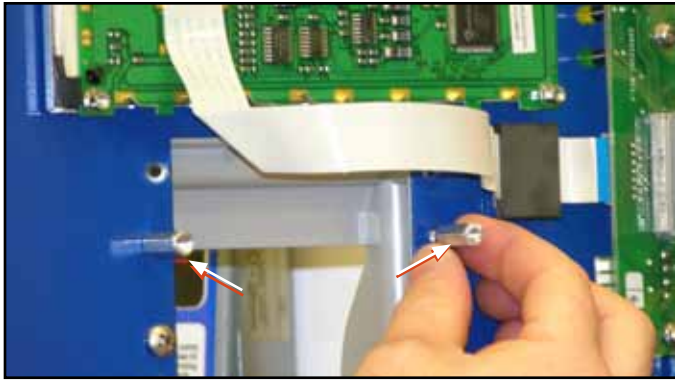


Figure 4: Install Stand-offs

11. Mount the printer so that the clear printer cover faces outward of the front door.



Figure 5: Mount Printer in Door

12. Attach the 6 screws for the thermal printer board to the front door (Figure 6). Refer to the screw chart on the previous page.

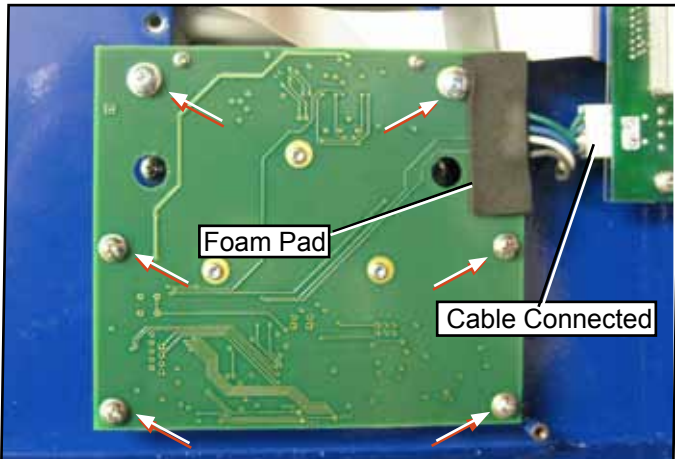


Figure 6: Printer Circuit Board Installed

13. Connect the cable from the thermal printer board to the interface board of the front door (Figure 6).
14. Tighten the two screws that hold the plastic bezel by inserting a screwdriver through the access holes in the circuit board.
15. Check to make sure the foam pad covers the corner of the circuit board where the power cables connect.

16. Replace the metal inside cover plate on the front door and fasten the screws. Make sure to reattach the ground connector to the plate.
17. Lift up on the green panel to open the printer and load paper (Figures 7-9). Make sure the roll is oriented as shown.

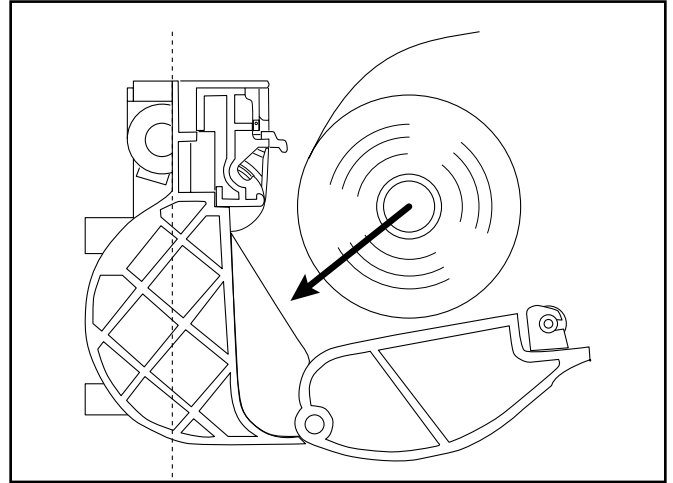


Figure 7: Load Paper



Figure 8: Do NOT load paper from door, Do NOT have paper wound loosely



Figure 9: Paper Loaded Correctly

18. Close the printer door.
19. Restore power to the tank gauge.

Paper Specifications

Type: Thermal Printer Paper
 Width: 58 mm (2.28")
 FFS part #: TS-TP2 (box of 5 rolls)
 TS-TP2C (Carton of 20 boxes = 100 rolls)

To print a test page

1. Once the tank gauge is on, press the Main Menu key on the LCD with the figure of a table (Figure 10).

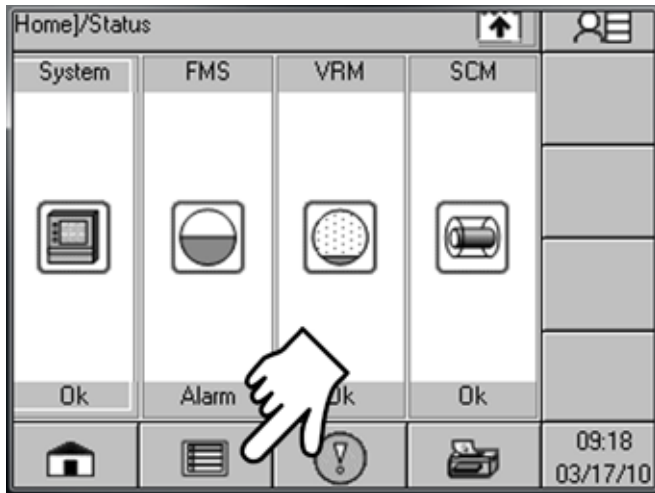


Figure 10: Select Main Menu

2. Press the arrow on the right side bar once.



Figure 11: Select Arrow Down

3. Press **Diagnostics**.

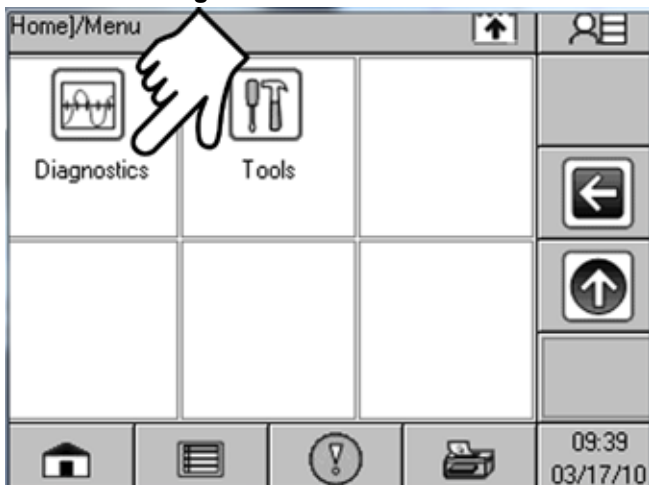


Figure 12: Select Diagnostics

4. Press **Print Test Page**.

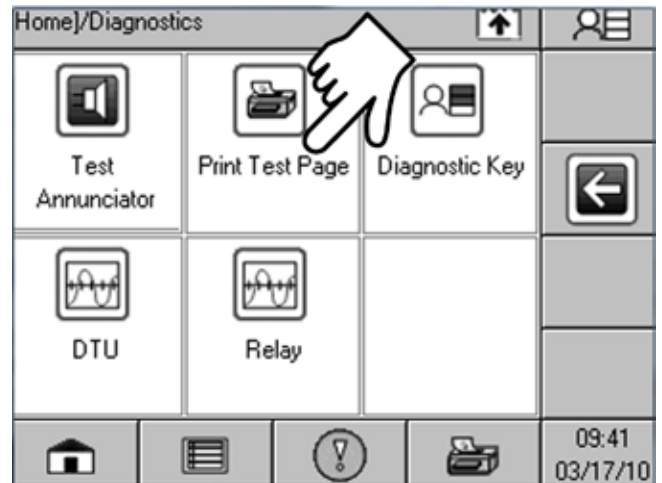


Figure 13: Print Test Page

Printer Operation Notes

- On rare occasions, when printing excessively long reports at high ambient temperature, the printer may need to pause momentarily. Printing will resume automatically after a few seconds.
- An open printer door or no-paper will generate an out-of-paper alarm.
- If you are trying to print and the paper is spooling but no text is printing, check paper roll orientation per Figure 7.
- The paper tear-bar is located at the top. Tear the paper with a lifting motion (Figure 14).

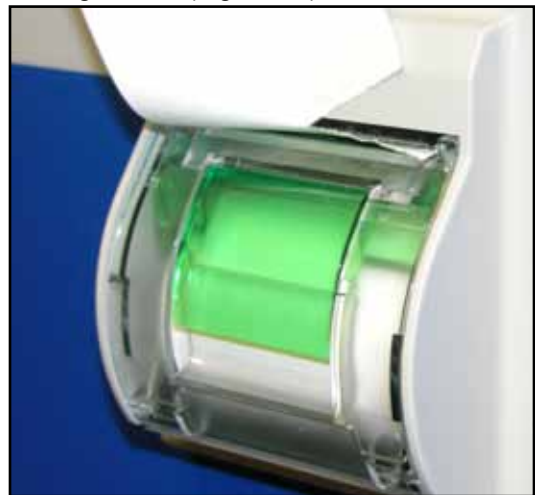


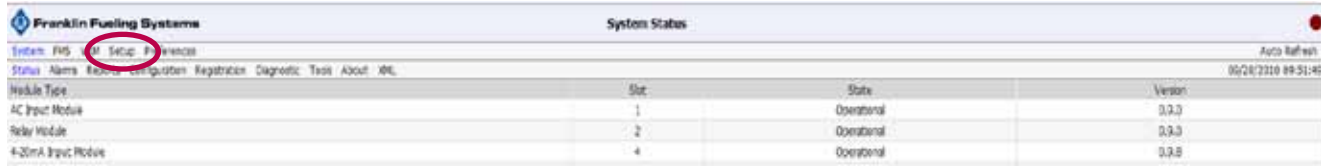
Figure 14: Tear Paper with Lifting Motion

To Setup a New Printer on a Console That Had No Printer

To physically install the printer, follow Printer Installation steps starting with step 9 on page 2.

The following steps illustrate how to program the T5 system through the computer connection when adding an internal printer. Log on to the console using a web browser interface (Refer to FMS Operator's Guide for further information).

From the System Screen, click on Setup



Module Type	Stat	State	Version
AC Input Module	1	Operational	0.0.0
Relay Module	2	Operational	0.0.0
4-20mA Input Module	4	Operational	0.0.0

Select System Configuration



Group Name	Parameter Name	Parameter Value
System ID	---	---
System Configuration	---	---
Probe Modules	---	---
4-20mA Input Modules	---	---
Power Supply	---	---
Relay Modules	---	---
Disenser Interface	---	---

Select Modules Expected




Group Name	Parameter Name	Parameter Value
System ID	---	---
System Configuration	Technical Support Key	0
	Enable Log Files	No
Modules Expected	---	---
Probe Modules	---	---
4-20mA Input Modules	---	---
Power Supply	---	---
Relay Modules	---	---
Disenser Interface	---	---

A list of all potential modules will be displayed. The number next to the module represents the number of modules that should be installed. When adding any module to the system, you must increase that module number by 1.



Group Name	Parameter Name	Parameter Value
System ID	---	---
System Configuration	Technical Support Key	0
	Enable Log Files	No
Modules Expected	ID	0
	AC Input	0

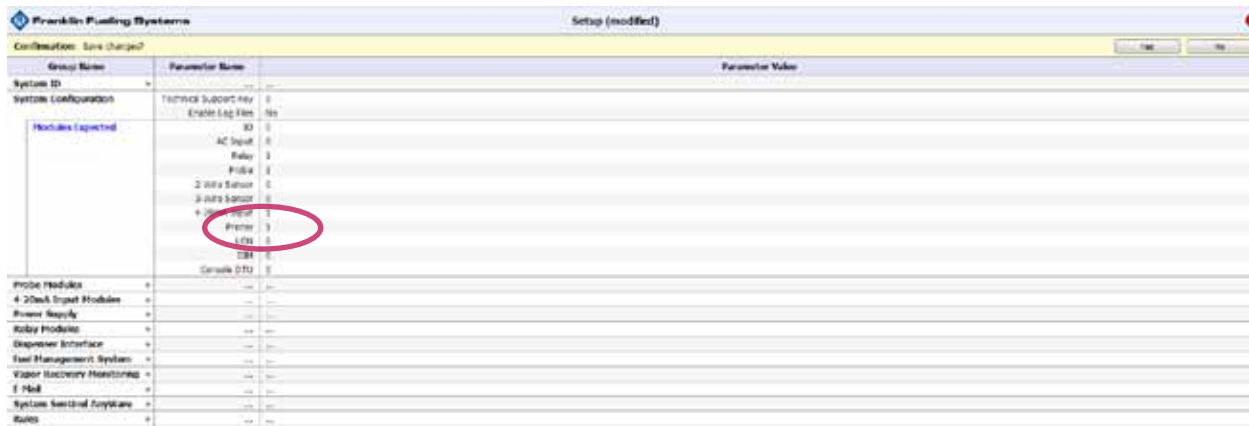
Click on the 0 next to Printer.



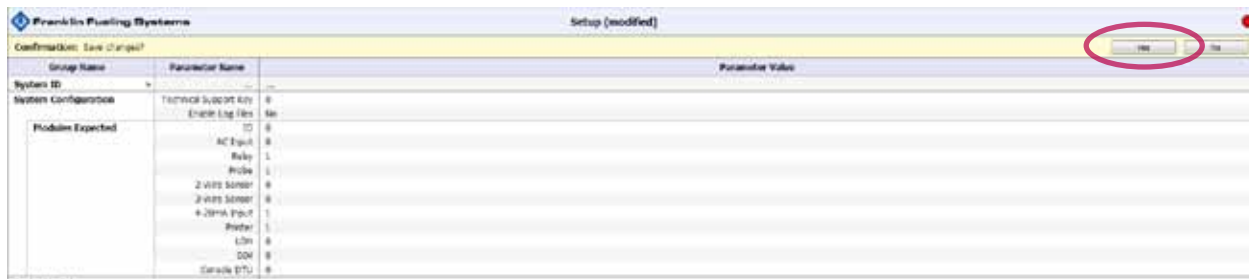
Group Name	Parameter Name	Parameter Value
System ID	---	---
System Configuration	Technical Support Key	0
	Enable Log Files	No
Modules Expected	ID	0
	AC Input	0
	Relay	1
	Probe	1
	2-Unit Sensor	0
	3-Unit Sensor	0
	4-20mA	1
	Printer	0

	231	0
	Console DTTI	0

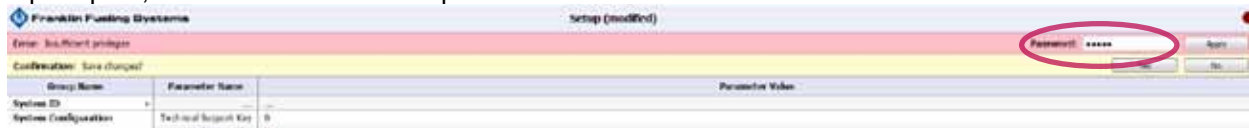
Change the 0 to a 1



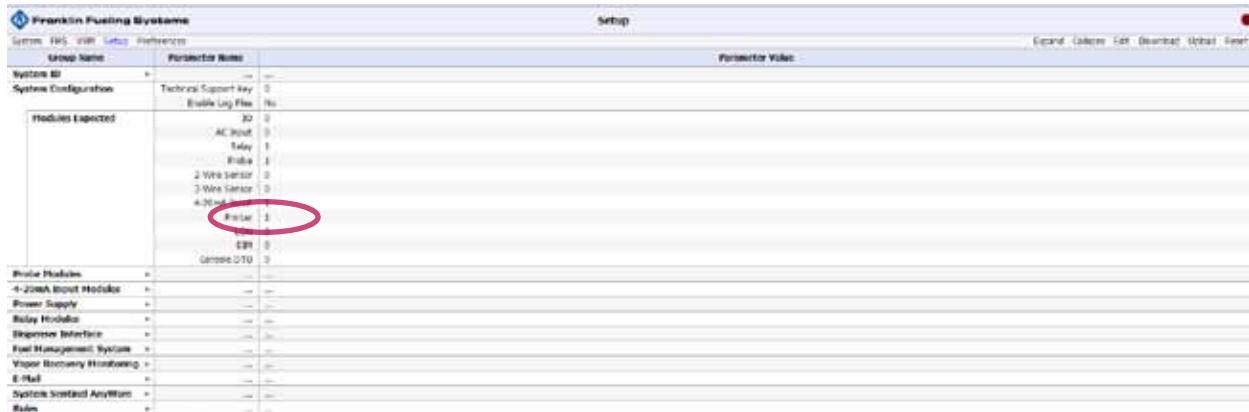
Click Yes to Save Changes



If prompted, enter the administrative password



Confirm that the Printer number is now 1. The system will now “look” for an internal printer



To Replace an Existing Thermal Printer

Warning  **Disconnect power before opening the console cover.**

1. Remove the back panel shown in Figure 1.
2. Remove the 6 screws as shown in Figure 6.
3. Remove the cable connection.
4. If the existing plastic bezel will still be used, follow installation instructions starting with step 12 on page 3.
5. Print a test page to verify operation.



Franklin Fueling Systems

www.franklinfueling.com

3760 Marsh Road • Madison, WI 53718, U.S.A.

Tel: +1 608 838 8786 • Fax: +1 608 838 6433

Tel: USA & Canada 1 800 225 9787 • Tel: México 001 800 738 7610

Franklin Fueling Systems GmbH

Rudolf-Diesel-Strasse 20 • 54516 Wittlich, GERMANY

Tel: +49-6571-105-380 • Fax: +49-6571-105-510