

9.3 Pressure Sensor Replacement

Safety



Use lockout / tagout procedures prior to starting work.

9.3.1 Removing the Pressure Sensor

- **See Figure 9-5 and 9-6.**
 1. Turn off the GREEN MACHINE breaker in the main electrical distribution panel.
 2. Follow lockout & tagout procedures prior to starting work.
 3. Unscrew the 8 cover screws and remove the cover from the GREEN MACHINE.
 4. Remove the cover from the Internal Junction Box.
 5. Remove the Pressure Sensor from the pressure sensor port.
 6. Disconnect the 3 Pressure Sensor wires from the terminal block inside the Internal Junction Box. **See Figure 9-5.**

9.3.2 Installing the Pressure Sensor

- **See Figure 9-5 and 9-6.**
 1. Install the new Pressure Sensor. Use gasoline resistant PTFE tape on the pipe threads.

CAUTION: Be sure to tighten the Pressure Sensor using the nut on the bottom of the sensor during the installation.
 2. Connect the Pressure Sensor wires to the terminal blocks inside the Internal Junction Box. **See Figure 9-5.**
 - Red to 03030
 - White to 04040
 - GND to GND
 3. Install the Internal Junction Box cover.
 4. Remove the lock(s) and tags from the lockout/tagout and turn the GREEN MACHINE breaker back on at the main electrical distribution panel.
 5. On the Control Panel, tap the Home button.
 6. Verify Pressure Sensor Alarm is not active and the pressure reading on the PLC is 0.00 +/- 0.10 IWC.
 7. Put the cover on the GREEN MACHINE and screw on the 8 cover screws.
 8. The GREEN MACHINE is now operational.

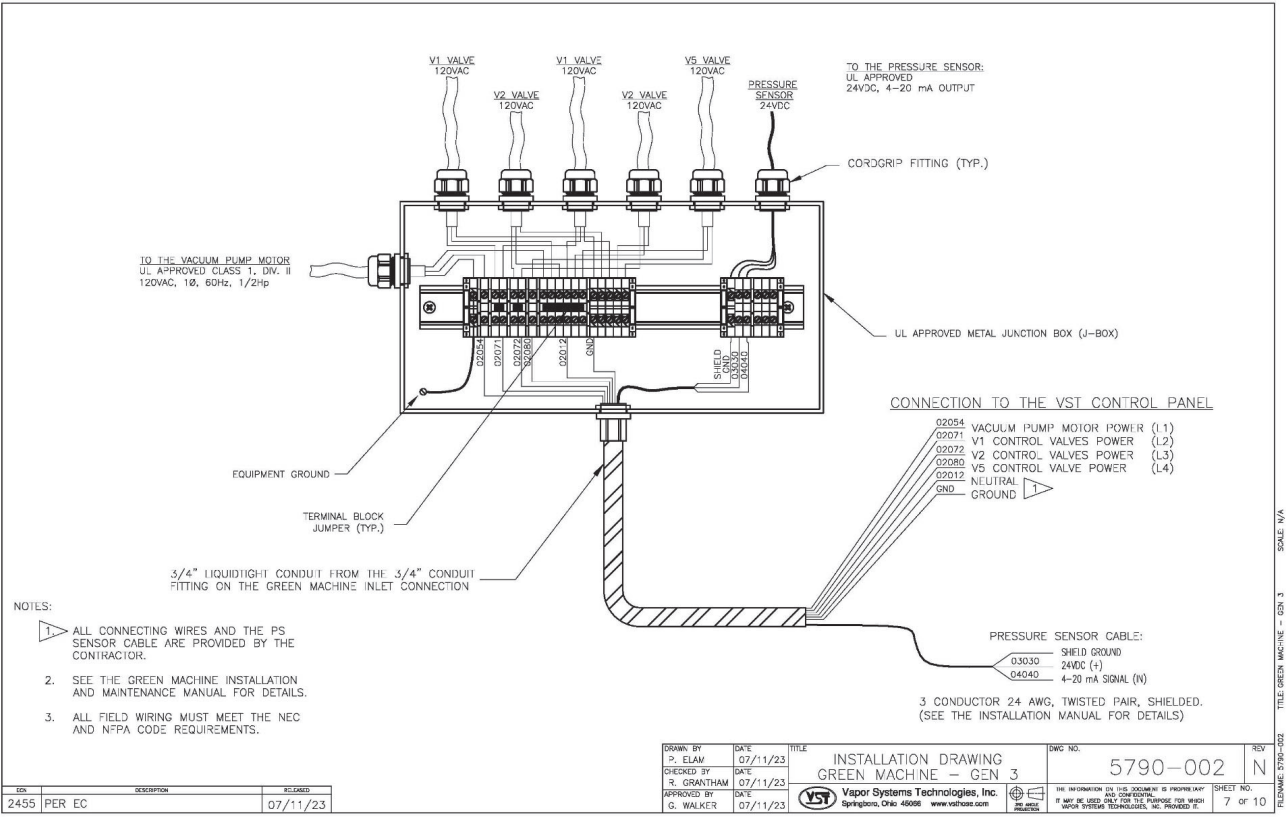


Figure 9-5: Wiring the Pressure Sensor Inside the Internal Junction Box

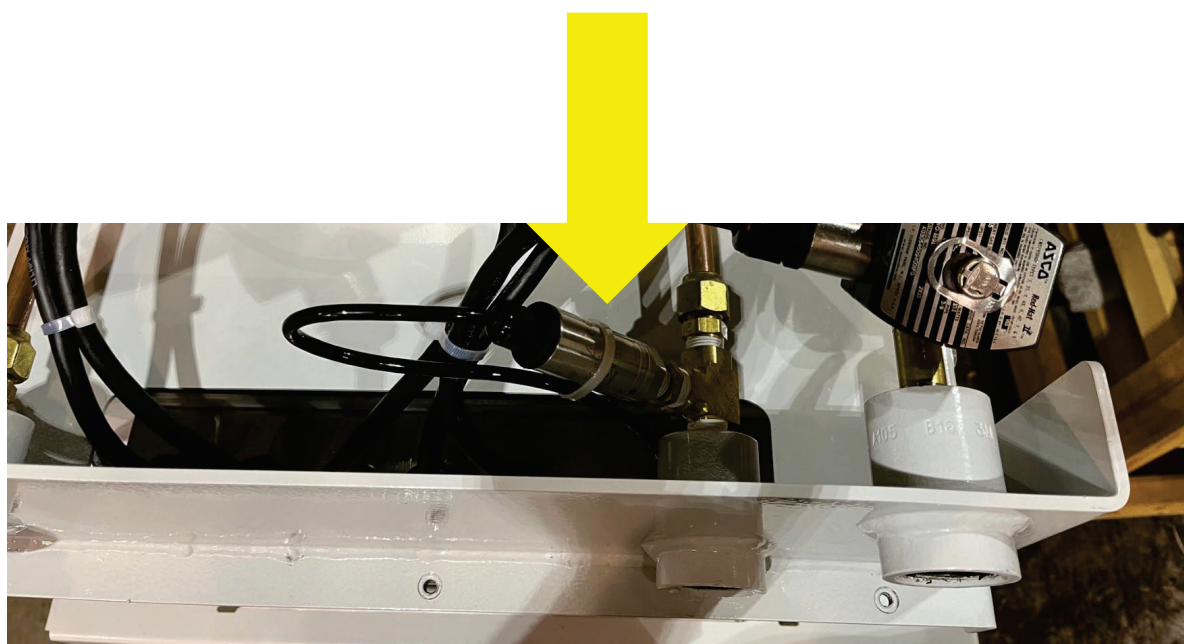


Figure 9-6: Pressure Sensor Installed in GREEN MACHINE