

## 8.7 Overfill Alarm

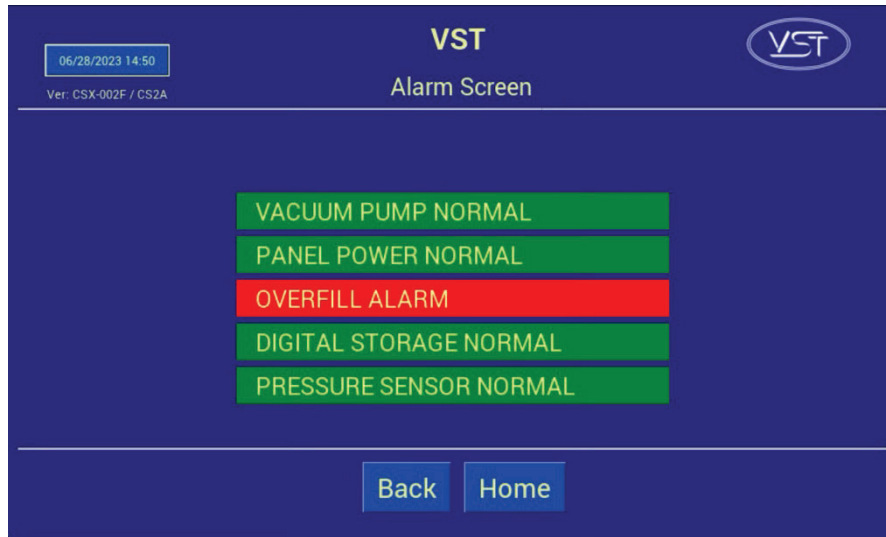


Figure 8-22: Alarm Screen with Active Alarm

- A VST Control Panel PLC Overfill Alarm is Active when the Fuel Management System Overfill Alarm is Active. **See Figure 8-22.**
- An overfill condition exists when, during a fuel drop, the gasoline level in the UST exceeds the Overfill Alarm setting, which is 90% capacity of the UST. **See Figure 8-23.**
  - The VST Control Panel is connected to the Tank Overfill Alarm output relay.
  - When an overfill occurs, the output (N.C.) relay opens and GREEN MACHINE will turn OFF.
  - The Overfill Alarm box will display RED indicating an Overfill Alarm is active.
  - When the gasoline level drops below the Overfill Alarm level, the output relay closes and the alarm clears. The GREEN MACHINE will remain OFF for 2 additional hours.
  - After the 2 hours elapse:
    - The Overfill Alarm box will not be shown on the Fault and Alarm Screen.
    - The GREEN MACHINE will turn ON if the UST pressure is above 0.2 IWC.
    - The GREEN MACHINE will remain OFF if the UST pressure is below 0.2 IWC.

### 8.7.1 Overfill Alarm Troubleshooting Steps

Steps	Procedures
1.	An overfill may cause the Vacuum Pump to seize, which may cause the Vacuum Pump motor to trip out on the thermal overloads.
2.	<p>If an Overfill Alarm Activates while a test is running:</p> <ul style="list-style-type: none"> <li>• The test will terminate.</li> <li>• The Fault and Alarm Screen is displayed and the Overfill Alarm box will display RED.</li> <li>• An underground storage tank overfill is a serious situation that could damage internal components in the GREEN MACHINE.</li> <li>• An overfill might happen if the delivery person fails to stop fueling, ignoring both the overfill limit and the high-product limit.</li> <li>• VST has determined that overfill protection is needed to reduce the chance of gasoline entering the GREEN MACHINE.</li> <li>• Below are the precautionary measures taken to protect the GREEN MACHINE against an overfill situation: <ul style="list-style-type: none"> <li>• The VST Control Panel will disable the GREEN MACHINE when the UST level reaches the OVERFILL Alarm setting (OVERFILL: 90%) when the relay contacts open at the Fuel Management System.</li> <li>• Eventually, as fuel is dispensed, the product would drop below the OVERFILL Alarm threshold thereby resetting the relay and re-enabling the GREEN MACHINE.</li> <li>• The Fuel Management System OVERFILL ALARM will not guarantee that the GREEN MACHINE is protected from gasoline entering it.</li> </ul> </li> </ul>
3.	The table below lists the VST recommended alarm settings for the tank level.

Position of Tank Alarm Limits	VST Recommended Alarm Settings
Overfill Limit	90%

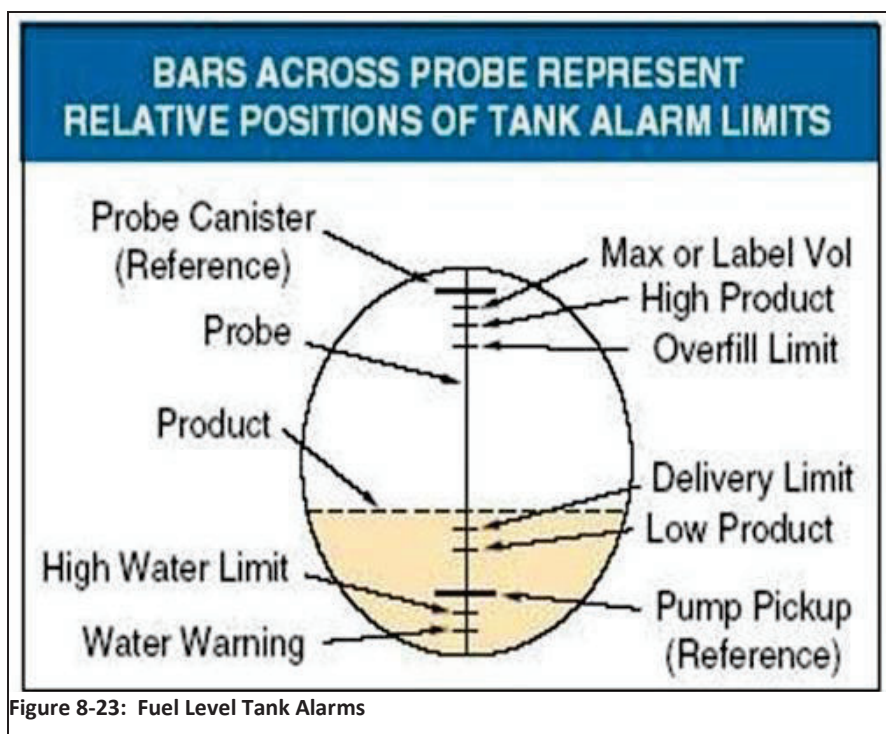


Figure 8-23: Fuel Level Tank Alarms

Overfill Report		
Date:		
Contractor Name:		
Contractor Company:		
GDF Name:		
Address:		
City:	State:	ZIP Code:
GDF Contact Person Name:		
GDF Contact Person Title:		
GDF Contact Person Phone:		
GDF Contact Person E-mail:		
Overfill Details		
Date of Overfill:		
Octane of the fuel being dispensed:		
Serial Number of the GREEN MACHINE:		