

## 8.7 Overfill Alarm

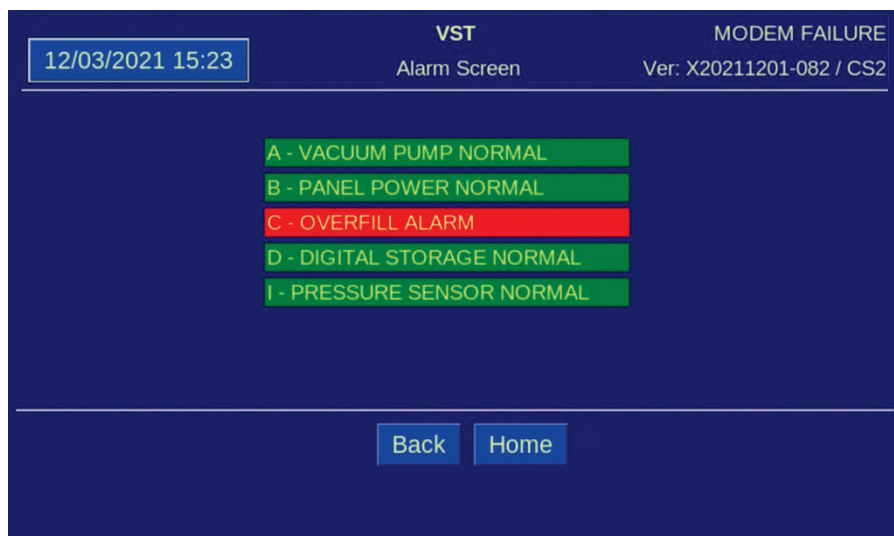


Figure 8-12: GREEN MACHINE PLC Alarm Screen

- A VST Control Panel PLC Overfill Alarm is Active when the Fuel Management System Overfill Alarm is Active. **See Figure 8-12.**
- An overfill condition exists when, during a fuel drop, the gasoline level in the UST exceeds the Overfill Alarm setting, which is 90% capacity of the UST. **See Figure 8-13.**
  - The VST Control Panel is connected to the Tank Overfill Alarm output relay.
  - When an overfill occurs, the output (N.C.) relay opens and GREEN MACHINE will turn OFF.
  - The Overfill Alarm box will display RED indicating an Overfill Alarm is active.
  - When the gasoline level drops below the Overfill Alarm level, the output relay closes and the alarm clears. The GREEN MACHINE will remain OFF for 2 additional hours.
  - After the 2 hours elapse:
    - The Overfill Alarm box will not be shown on the Fault and Alarm Screen.
    - The GREEN MACHINE will turn ON if the UST pressure is above 0.2 IWC.
    - The GREEN MACHINE will remain OFF if the UST pressure is below 0.2 IWC.

### 8.7.1 Overfill Alarm Troubleshooting Steps

Steps	Procedures
<ol style="list-style-type: none"> <li>1. An overfill may cause the Vacuum Pump to seize, which may cause the Vacuum Pump motor to trip out on the thermal overloads.</li>   <li>2. If an Overfill Alarm Activates while a test is running:               <ul style="list-style-type: none"> <li>• The test will terminate.</li> <li>• The Fault and Alarm Screen is displayed and the Overfill Alarm box will display RED.</li> <li>• An underground storage tank overfill is a serious situation that could damage internal components in the GREEN MACHINE.</li> <li>• An overfill might happen if the delivery person fails to stop fueling, ignoring both the overfill limit and the high-product limit.</li> <li>• VST has determined that overfill protection is needed to reduce the chance of gasoline entering the GREEN MACHINE.</li> <li>• Below are the precautionary measures taken to protect the GREEN MACHINE against an overfill situation:                   <ul style="list-style-type: none"> <li>• The VST Control Panel will disable the GREEN MACHINE when the UST level reaches the OVERFILL Alarm setting (OVERFILL: 90%) when the relay contacts close at the Fuel Management System.</li> <li>• Eventually, as fuel is dispensed, the product would drop below the OVERFILL Alarm threshold thereby resetting the relay and re-enabling the GREEN MACHINE.</li> <li>• The Fuel Management System OVERFILL ALARM will not guarantee that the GREEN MACHINE is protected from gasoline entering it.</li> </ul> </li> </ul> </li>   <li>3. The table below lists the VST recommended alarm settings for the tank level.</li> </ol>	

Position of Tank Alarm Limits	VST Recommended Alarm Settings
Overfill Limit	90%

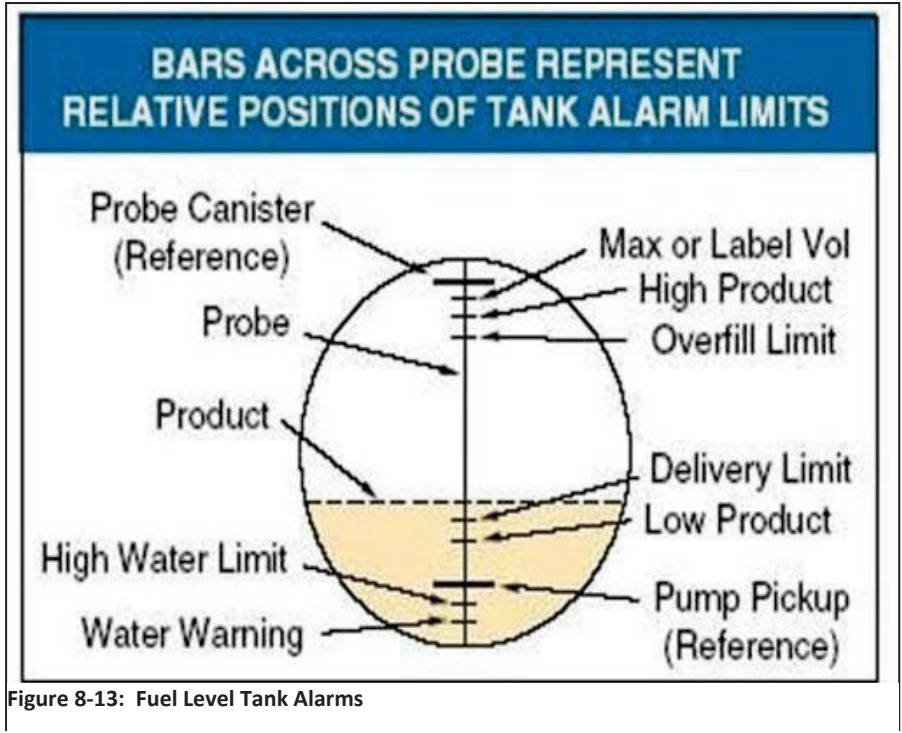


Figure 8-13: Fuel Level Tank Alarms

<b>Overfill Report</b>		
Date:		
Contractor Name:		
Contractor Company:		
GDF Name:		
Address:		
City:	State:	ZIP Code:
GDF Contact Person Name:		
GDF Contact Person Title:		
GDF Contact Person Phone:		
GDF Contact Person E-mail:		
Overfill Details		
Date of Overfill:		
Octane of the fuel being dispensed:		
Serial Number of the GREEN MACHINE:		